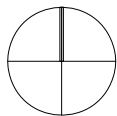
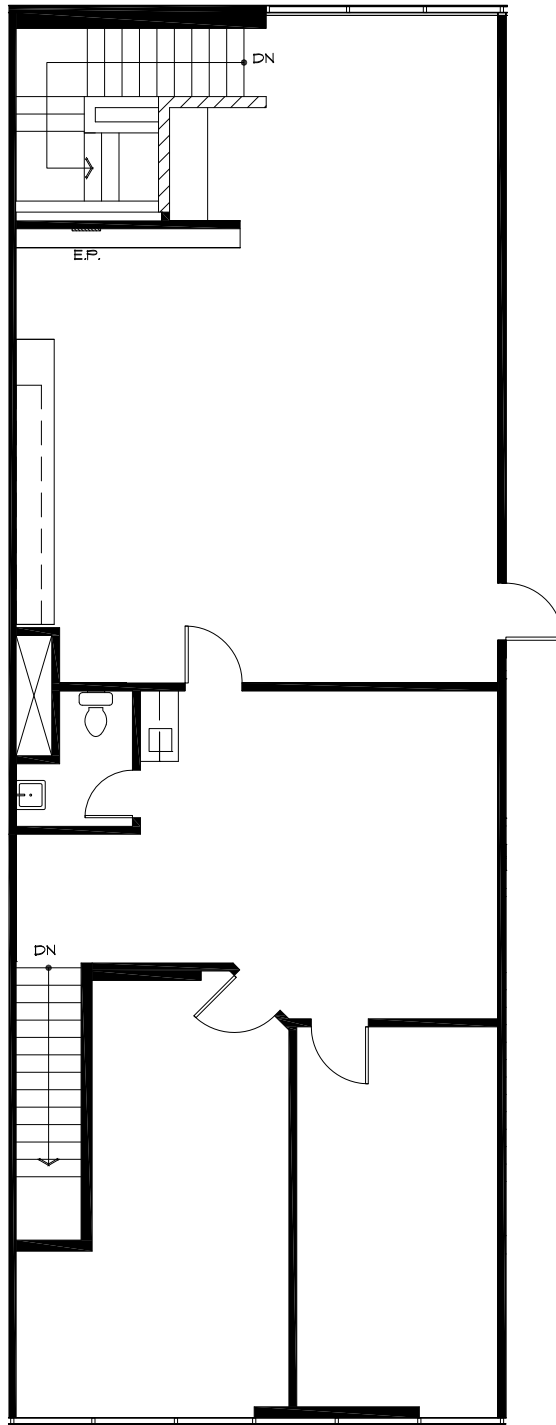


N:\Project files\Projects\99-00-01-02\366-00 Ball Road Business Park\366-01 as built\366.01 sp pt-202 7-23-13.dwg, Ver SP, 7/25/2013 2:13:38 PM



NORTH



CDL Associates, Inc.

INTERIOR ARCHITECTURE & SPACE PLANNING
9265 Research Drive
Irvine, CA. 92618
(949) 679-6456 • Fax (949) 679-6460
E-mail: CDL@cdblassociatesinc.com

SUITE 202

BALL ROAD BUSINESS PARK
741 EAST BALL ROAD,
SUITE 202
ANAHEIM, CA
1,970 R. SQ. FT.
07/23/13

PLAN LAYOUT SUBJECT TO FIELD CONDITIONS. FIELD CONDITIONS MAY DIFFER FROM PLAN AS SHOWN. ALL ROOM SIZES ARE APPROXIMATE. ALL INFORMATION REPRESENTED ON THIS DRAWING IS BELIEVED TO BE ACCURATE. HOWEVER, TENANT SHOULD VERIFY ALL PERTINENT INFORMATION PRIOR TO COMMITTING TO A LEASE. THIS PLAN IS NOT INTENDED FOR CONSTRUCTION PURPOSES.