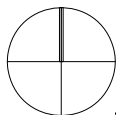
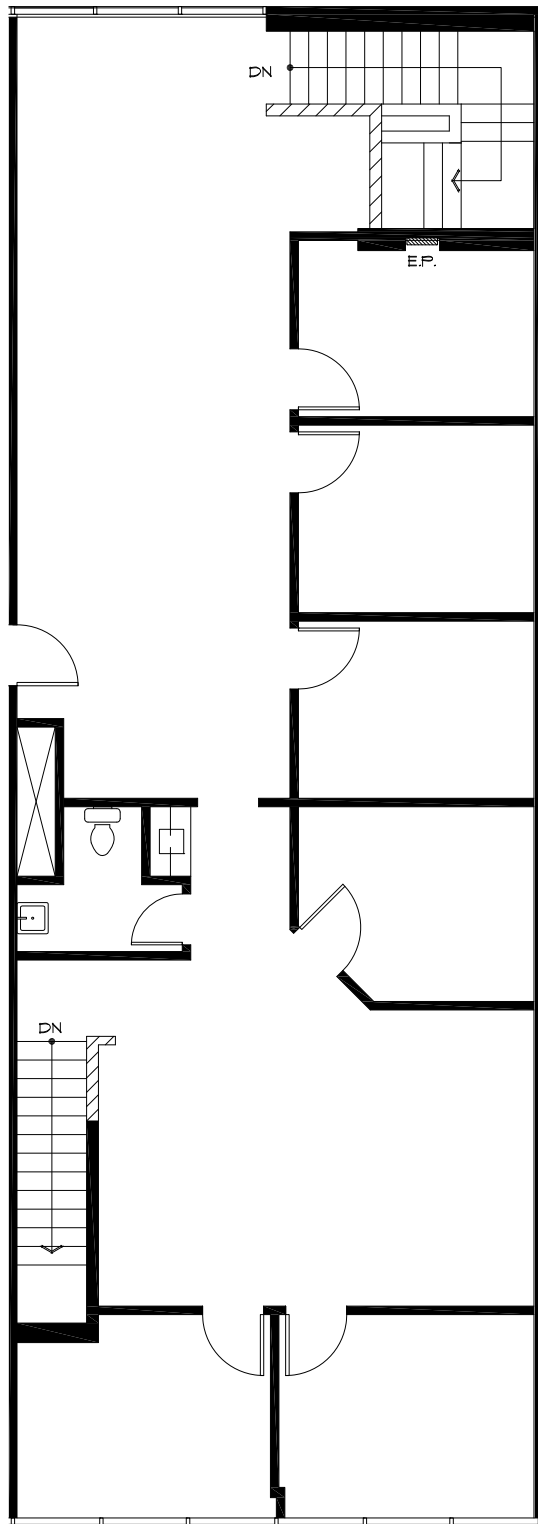


N:\Project files\Projects\99-00-01-02\366-00 Ball Road Business Park\366-01 as built\366.01 sp.plt-203 7-23-13.dwg, Ver SP, 7/25/2013 2:15:11 PM



NORTH



**CDL Associates, Inc.**

INTERIOR ARCHITECTURE & SPACE PLANNING  
9265 Research Drive  
Irvine, CA. 92618  
(949) 679-6456 • Fax (949) 679-6460  
E-mail: CDL@cclassociatesinc.com

### SUITE 203

BALL ROAD BUSINESS PARK  
741 EAST BALL ROAD,  
SUITE 203  
ANAHEIM, CA  
1,981 R. SQ. FT.  
07/23/13

PLAN LAYOUT SUBJECT TO FIELD CONDITIONS. FIELD CONDITIONS MAY DIFFER FROM PLAN AS SHOWN. ALL ROOM SIZES ARE APPROXIMATE. ALL INFORMATION REPRESENTED ON THIS DRAWING IS BELIEVED TO BE ACCURATE. HOWEVER, TENANT SHOULD VERIFY ALL PERTINENT INFORMATION PRIOR TO COMMITTING TO A LEASE. THIS PLAN IS NOT INTENDED FOR CONSTRUCTION PURPOSES.