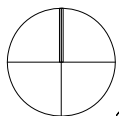
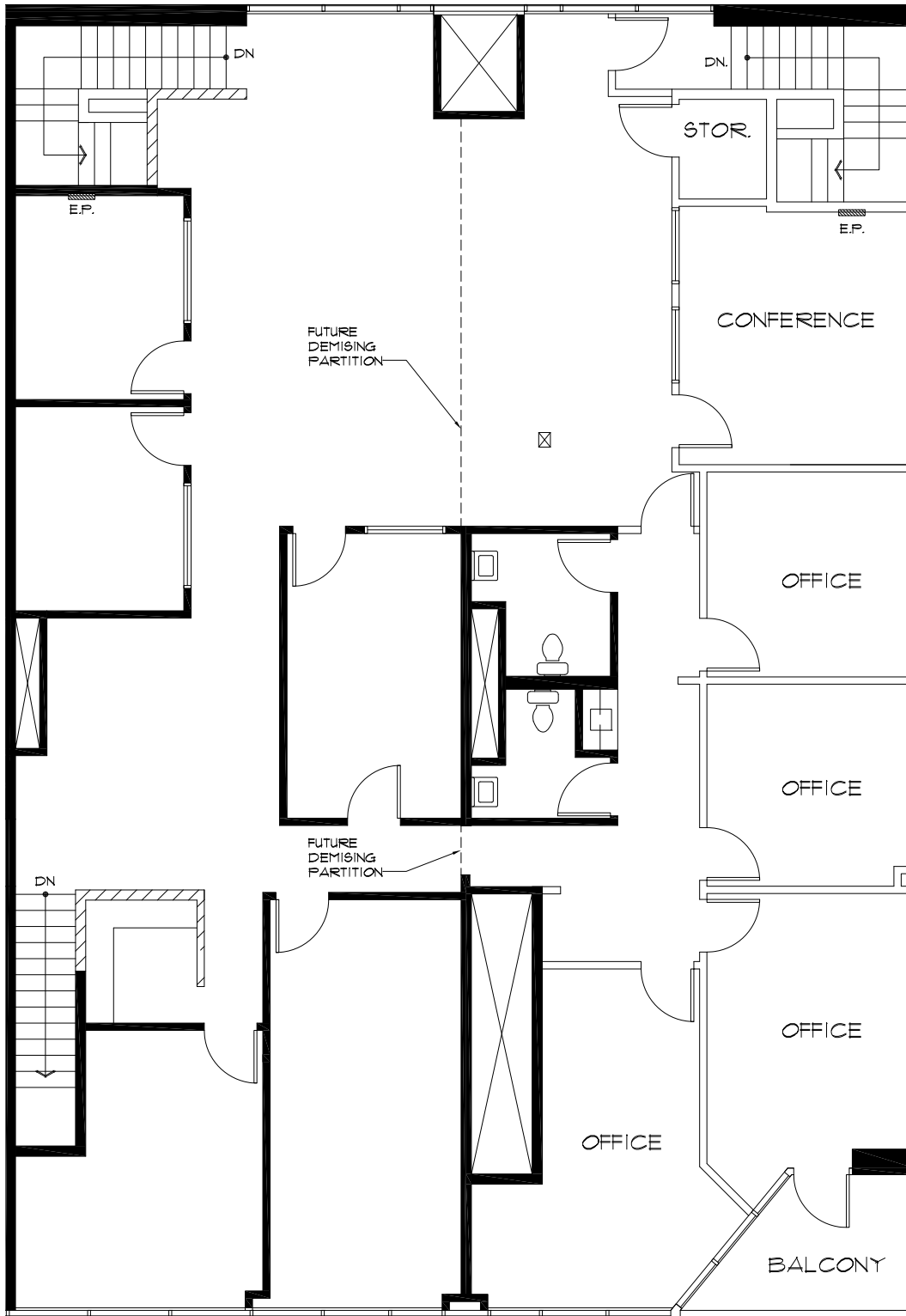


N:\Project files\Projects\99-00-01-02\366-00 Ball Road Business Park\366-01 as built\366.01 741 E Ball Rd\366.01 sp pt-205 7-23-13.dwg, Ver SP, 7/25/2013 2:40:32 PM



NORTH



CDL Associates, Inc.

INTERIOR ARCHITECTURE & SPACE PLANNING
 9265 Research Drive
 Irvine, CA. 92618
 (949) 679-6456 • Fax (949) 679-6460
 E-mail: CDL@cclassociatesinc.com

SUITE 205 & 206

BALL ROAD BUSINESS PARK
 741 EAST BALL ROAD,
 SUITE 205
 ANAHEIM, CA
 1,939 R. SQ. FT.
 07/23/13

PLAN LAYOUT SUBJECT TO FIELD CONDITIONS. FIELD CONDITIONS MAY DIFFER FROM PLAN AS SHOWN. ALL ROOM SIZES ARE APPROXIMATE. ALL INFORMATION REPRESENTED ON THIS DRAWING IS BELIEVED TO BE ACCURATE. HOWEVER, TENANT SHOULD VERIFY ALL PERTINENT INFORMATION PRIOR TO COMMITTING TO A LEASE. THIS PLAN IS NOT INTENDED FOR CONSTRUCTION PURPOSES.